

MICHIGAN MISSION-BASED PERFORMANCE INDICATOR SYSTEM

# **PIHP**

## **Performance Indicator Trending Report**

FY'23 – FY'25

*updated April 2025*



SAGINAW COUNTY  
COMMUNITY MENTAL  
HEALTH AUTHORITY

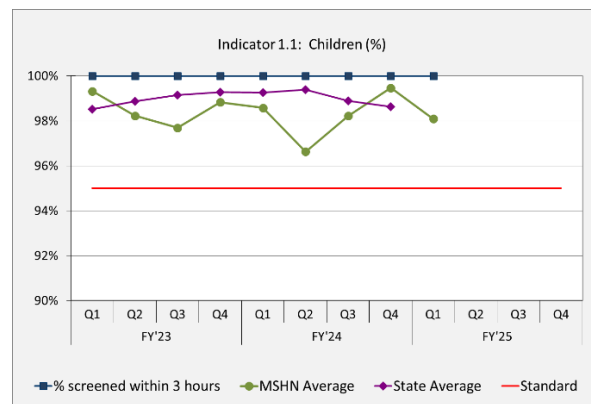
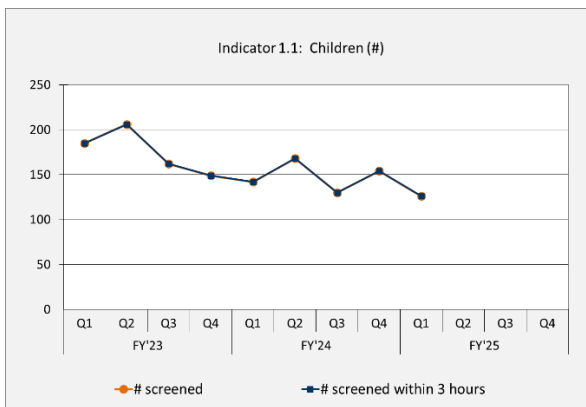


**Indicator 1: ACCESS-TIMELINESS/INPATIENT SCREENING:** The percentage of persons during the quarter receiving a pre-admission screening for psychiatric inpatient care for whom the disposition was completed within 3 hours. Standard = 95%

*Rationale for Use: People who are experiencing symptoms serious enough to warrant evaluation for inpatient care are potentially at risk of danger to themselves or others. Thus, time is of the essence. This indicator assesses whether CMHSPs and PIHPs are meeting the Department's standard that 95% of the inpatient screenings have a final disposition within 3 hours. This indicator is a standard measure of access to care.*

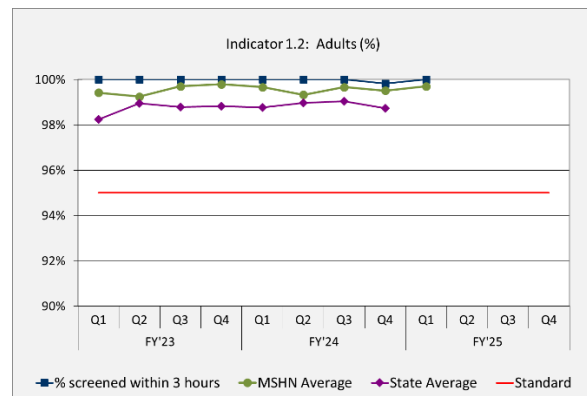
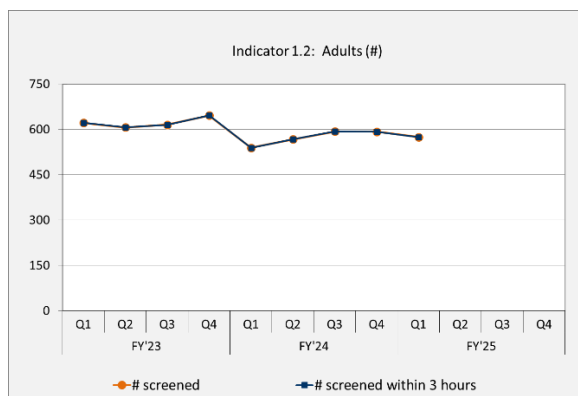
#### Indicator 1.1: Children

	FY'23					FY'24					FY'25				
	Q1	Q2	Q3	Q4	TOTAL	Q1	Q2	Q3	Q4	TOTAL	Q1	Q2	Q3	Q4	TOTAL
# screened	185	206	162	149	702	142	168	130	154	594	126				
# screened within 3 hours	185	206	162	149	702	142	168	130	154	594	126				
# not screened within 3 hours	0	0	0	0	0	0	0	0	0	0	0				
% screened within 3 hours	100.00%	100.00%	100.00%	100.00%	100.00%	100.00%	100.00%	100.00%	100.00%	100.00%	100.00%				
MSHN Average	99.32%	98.23%	97.69%	98.83%		98.58%	96.63%	98.22%	99.47%		98.09%				
State Average	98.53%	98.87%	99.15%	99.29%		99.26%	99.38%	98.88%	98.63%						
Standard	95%	95%	95%	95%	95%	95%	95%	95%	95%	95%	95%	95%	95%	95%	95%



#### Indicator 1.2: Adults

	FY'23					FY'24					FY'25				
	Q1	Q2	Q3	Q4	TOTAL	Q1	Q2	Q3	Q4	TOTAL	Q1	Q2	Q3	Q4	TOTAL
# screened	621	606	615	646	2,488	539	567	593	592	2,291	574				
# screened within 3 hours	621	606	615	646	2,488	539	567	593	591	2,290	574				
# not screened within 3 hours	0	0	0	0	0	0	0	0	1	1	0				
% screened within 3 hours	100.00%	100.00%	100.00%	100.00%	100.00%	100.00%	100.00%	100.00%	99.83%	99.96%	100.00%				
MSHN Average	99.42%	99.25%	99.70%	99.79%		99.67%	99.33%	99.67%	99.51%		99.70%				
State Average	98.24%	98.95%	98.79%	98.82%		98.78%	98.96%	99.05%	98.74%						
Standard	95%	95%	95%	95%	95%	95%	95%	95%	95%	95%	95%	95%	95%	95%	95%

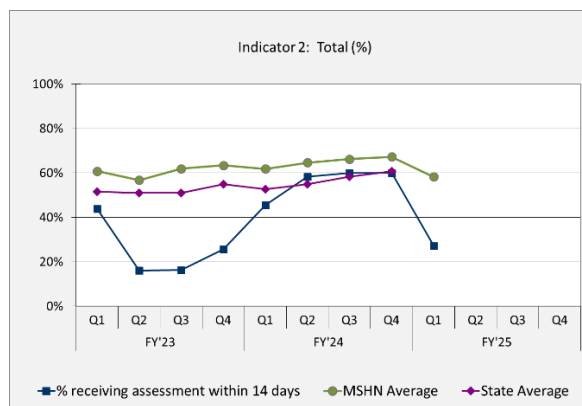
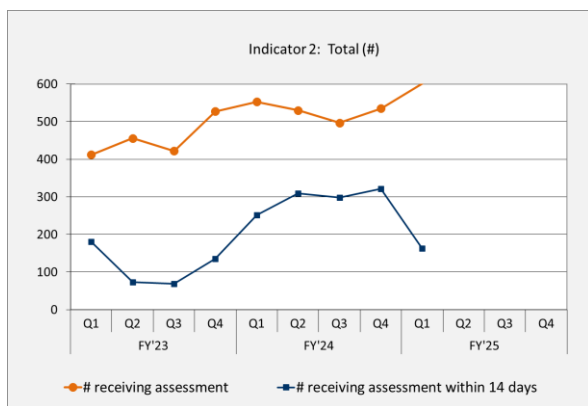


**Indicator 2A\* (new): ACCESS-TIMELINESS/FIRST REQUEST:** The percentage of new persons during the quarter receiving a face-to-face assessment with a professional within 14 calendar days of a non-emergency request for service. \*Effective FY20Q3, MDHHS has removed all exception reasons. Standard = No standard for first year of implementation.

*Rationale for Use: Quick, convenient entry into the public mental health system is a critical aspect of accessibility of services. Delays in clinical and psychological assessment may lead to exacerbation of symptoms and distress and poorer role functioning. The amount of time between a request for service and clinical assessment with a professional is one measure of access to care.*

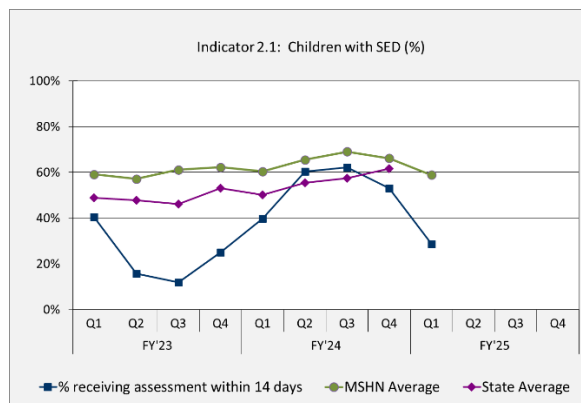
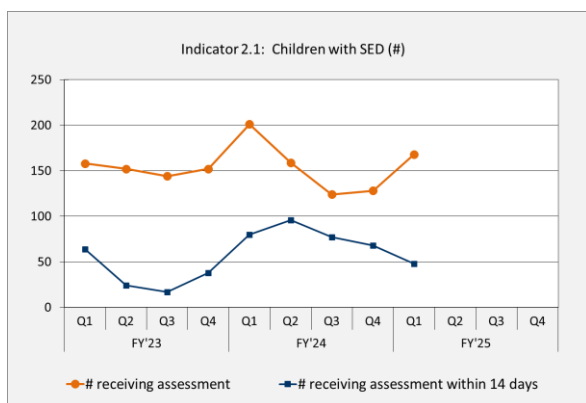
#### Indicator 2: Total

	FY'23					FY'24					FY'25				
	Q1	Q2	Q3	Q4	TOTAL	Q1	Q2	Q3	Q4	TOTAL	Q1	Q2	Q3	Q4	TOTAL
# receiving assessment	412	456	422	527	1,817	553	530	497	535	2,115	601				
# receiving assessment within 14 days	181	73	69	135	458	252	309	298	321	1,180	163				
# not receiving assessment within 14 days	231	383	353	392	1,359	301	221	199	214	935	438				
% receiving assessment within 14 days	43.93%	16.01%	16.35%	25.62%	25.21%	45.57%	58.30%	59.96%	60.00%	55.79%	27.12%				
MSHN Average	60.81%	56.75%	61.94%	63.36%		61.79%	64.60%	66.21%	67.27%		58.29%				
State Average	51.57%	51.03%	50.92%	54.86%		52.71%	55.00%	58.27%	60.79%						
Standard										62.30%					62.30%



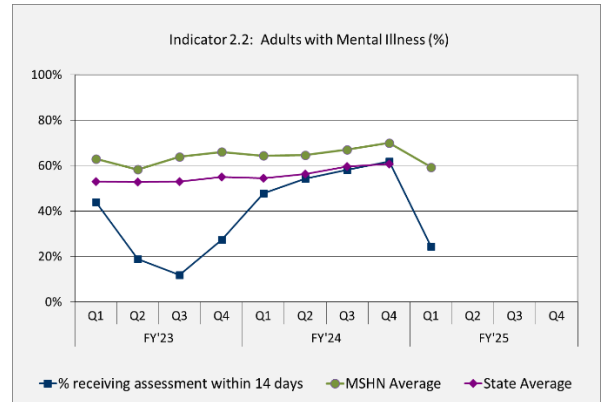
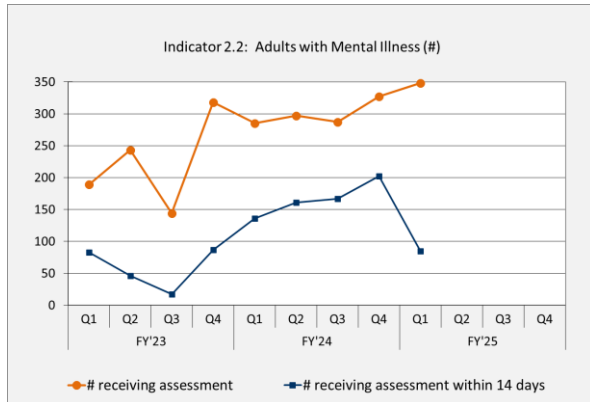
#### Indicator 2.1: Children with Serious Emotional Disturbances (SED)

	FY'23					FY'24					FY'25				
	Q1	Q2	Q3	Q4	TOTAL	Q1	Q2	Q3	Q4	TOTAL	Q1	Q2	Q3	Q4	TOTAL
# receiving assessment	158	152	144	152	606	201	159	124	128	612	168				
# receiving assessment within 14 days	64	24	17	38	143	80	96	77	68	321	48				
# not receiving assessment within 14 days	94	128	127	114	463	121	63	47	60	291	120				
% receiving assessment within 14 days	40.51%	15.79%	11.81%	25.00%	23.60%	39.80%	60.38%	62.10%	53.13%	52.45%	28.57%				
MSHN Average	59.14%	57.13%	61.13%	62.22%		60.43%	65.52%	69.02%	66.16%		58.89%				
State Average	48.83%	47.84%	46.20%	53.12%		50.22%	55.38%	57.49%	61.69%						
Standard															

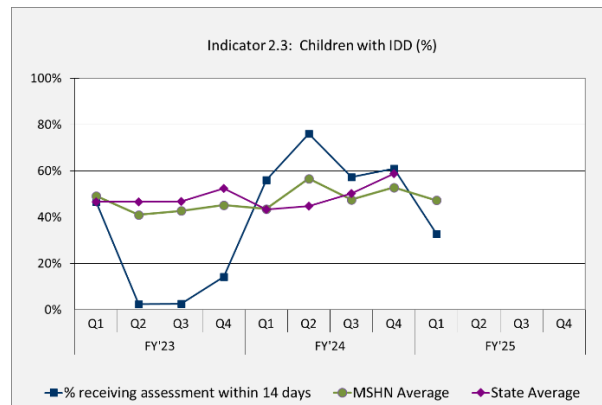
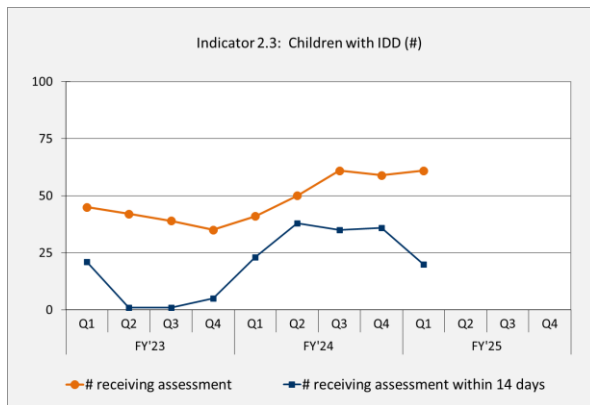


**Indicator 2.2: Adults with Mental Illness (MI)**

	FY'23					FY'24					FY'25				
	Q1	Q2	Q3	Q4	TOTAL	Q1	Q2	Q3	Q4	TOTAL	Q1	Q2	Q3	Q4	TOTAL
# receiving assessment	189	243	144	318	894	285	297	287	327	1,196	348				
# receiving assessment within 14 days	83	46	17	87	233	136	161	167	202	666	85				
# not receiving assessment within 14 days	106	197	127	231	661	149	136	120	125	530	263				
% receiving assessment within 14 days	43.92%	18.93%	11.81%	27.36%	26.06%	47.72%	54.21%	58.19%	61.77%	55.69%	24.43%				
MSHN Average	62.95%	58.27%	63.84%	65.97%		64.31%	64.59%	67.02%	69.97%		59.26%				
State Average	53.02%	52.74%	52.96%	55.06%		54.44%	56.21%	59.52%	60.64%						
Standard															

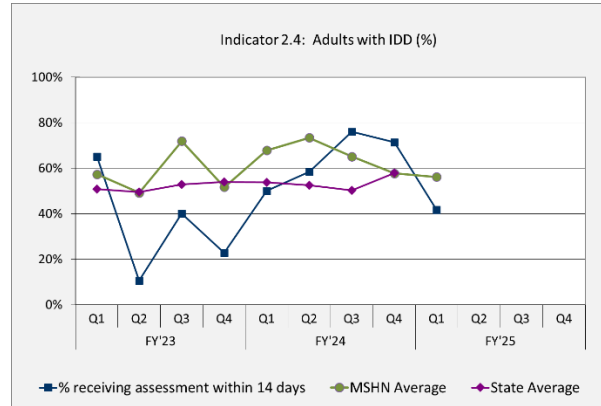
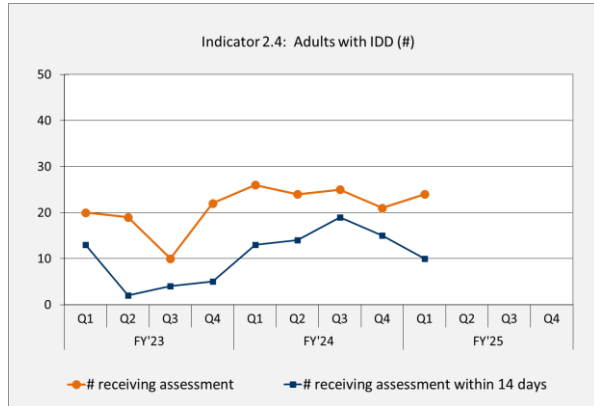

**Indicator 2.3: Children with Intellectual and Developmental Disabilities (IDD)**

	FY'23					FY'24					FY'25				
	Q1	Q2	Q3	Q4	TOTAL	Q1	Q2	Q3	Q4	TOTAL	Q1	Q2	Q3	Q4	TOTAL
# receiving assessment	45	42	39	35	161	41	50	61	59	211	61				
# receiving assessment within 14 days	21	1	1	5	28	23	38	35	36	132	20				
# not receiving assessment within 14 days	24	41	38	30	133	18	12	26	23	79	41				
% receiving assessment within 14 days	46.67%	2.38%	2.56%	14.29%	17.39%	56.10%	76.00%	57.38%	61.02%	62.56%	32.79%				
MSHN Average	49.21%	40.98%	42.74%	45.21%		43.51%	56.63%	47.51%	52.78%		47.29%				
State Average	46.58%	46.67%	46.68%	52.39%		43.37%	44.73%	50.15%	58.74%						
Standard															



**Indicator 2.4: Adults with Intellectual and Developmental Disabilities (IDD)**

	FY'23					FY'24					FY'25				
	Q1	Q2	Q3	Q4	TOTAL	Q1	Q2	Q3	Q4	TOTAL	Q1	Q2	Q3	Q4	TOTAL
# receiving assessment	20	19	10	22	71	26	24	25	21	96	24				
# receiving assessment within 14 days	13	2	4	5	24	13	14	19	15	61	10				
# not receiving assessment within 14 days	7	17	6	17	47	13	10	6	6	35	14				
% receiving assessment within 14 days	65.00%	10.53%	40.00%	22.73%	33.80%	50.00%	58.33%	76.00%	71.43%	63.54%	41.67%				
MSHN Average	57.29%	49.18%	71.91%	51.69%		67.83%	73.33%	65.09%	57.69%		56.12%				
State Average	50.88%	49.57%	52.83%	53.90%		53.82%	52.39%	50.15%	57.82%						
Standard															



**Indicator 3\* (new): ACCESS-TIMELINESS/FIRST SERVICE**

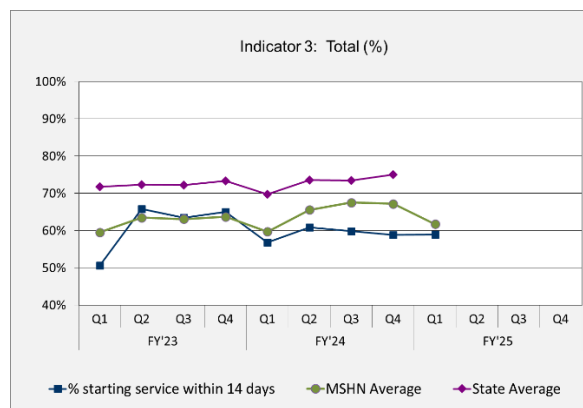
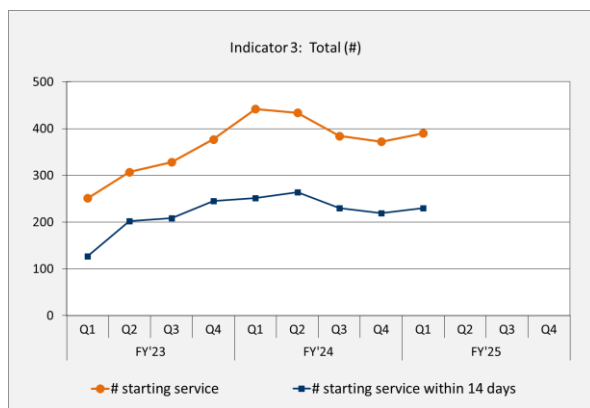
Percentage of new persons during the quarter starting any needed on-going service within 14 days of a non-emergent face-to-face assessment with a professional. \*Effective FY20Q3, MDHHS has removed all exception reasons.

Standard = No standard for first year of implementation.

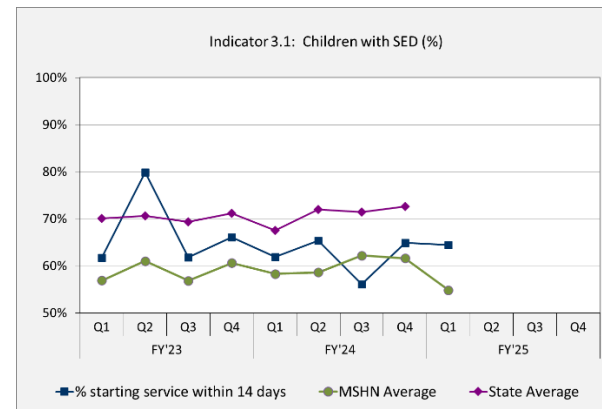
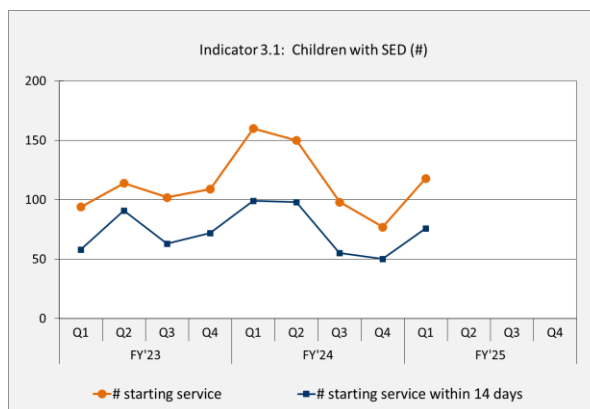
*Rationale for Use: The amount of time between professional assessment and the delivery of needed treatments and supports addresses a different aspect of access to care than Indicator #2. Delay in the delivery of needed services and supports may lead to exacerbation of symptoms and distress and poorer role functioning.*

**Indicator 3: Total**

	FY'23					FY'24					FY'25				
	Q1	Q2	Q3	Q4	TOTAL	Q1	Q2	Q3	Q4	TOTAL	Q1	Q2	Q3	Q4	TOTAL
# starting service	251	307	328	377	1,263	442	434	384	372	1,632	390				
# starting service within 14 days	127	202	208	245	782	251	264	230	219	964	230				
# not starting service within 14 days	124	105	120	132	481	191	170	154	153	668	160				
% starting service within 14 days	50.60%	65.80%	63.41%	64.99%	61.92%	56.79%	60.83%	59.90%	58.87%	59.07%	58.97%				
MSHN Average	59.53%	63.50%	63.09%	63.68%		59.72%	65.56%	67.52%	67.19%		61.76%				
State Average	71.78%	72.31%	72.23%	73.32%		69.72%	73.55%	73.41%	75.06%						
Standard										72.90%					72.90%

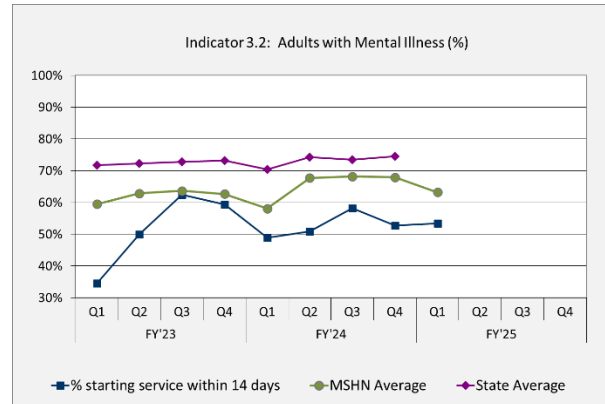
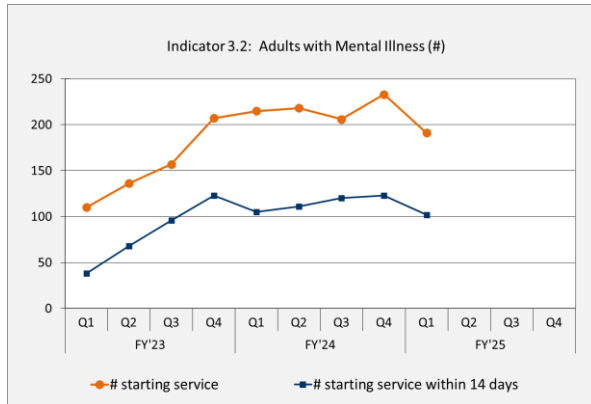

**Indicator 3.1: Children with Serious Emotional Disturbances (SED)**

	FY'23					FY'24					FY'25				
	Q1	Q2	Q3	Q4	TOTAL	Q1	Q2	Q3	Q4	TOTAL	Q1	Q2	Q3	Q4	TOTAL
# starting service	94	114	102	109	419	160	150	98	77	485	118				
# starting service within 14 days	58	91	63	72	284	99	98	55	50	302	76				
# not starting service within 14 days	36	23	39	37	135	61	52	43	27	183	42				
% starting service within 14 days	61.70%	79.82%	61.76%	66.06%	67.78%	61.88%	65.33%	56.12%	64.94%	62.27%	64.41%				
MSHN Average	56.86%	61.01%	56.82%	60.61%		58.28%	58.59%	62.21%	61.60%		54.86%				
State Average	70.11%	70.63%	69.31%	71.19%		67.55%	71.97%	71.42%	72.58%						
Standard															

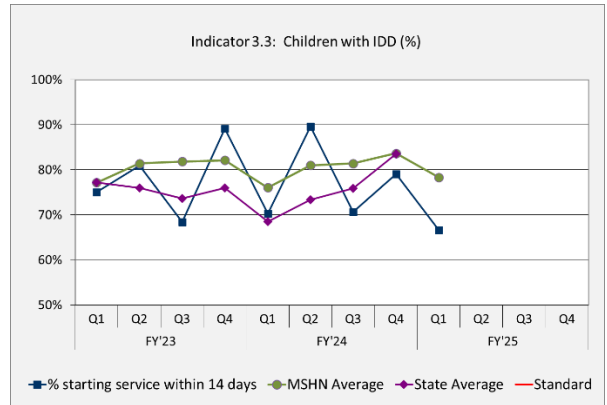
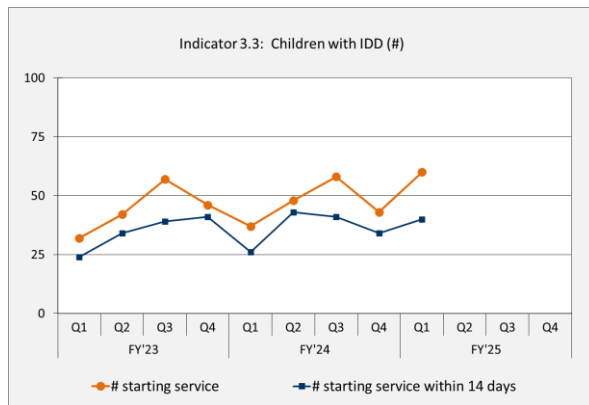


**Indicator 3.2: Adults with Mental Illness (MI)**

	FY'23					FY'24					FY'25				
	Q1	Q2	Q3	Q4	TOTAL	Q1	Q2	Q3	Q4	TOTAL	Q1	Q2	Q3	Q4	TOTAL
# starting service	110	136	157	207	610	215	218	206	233	872	191				
# starting service within 14 days	38	68	96	123	325	105	111	120	123	459	102				
# not starting service within 14 days	72	68	59	84	283	110	107	86	110	413	89				
% starting service within 14 days	34.55%	50.00%	62.42%	59.42%	53.28%	48.84%	50.92%	58.25%	52.79%	52.64%	53.40%				
MSHN Average	59.47%	62.85%	63.68%	62.69%		58.09%	67.71%	68.21%	67.95%		63.24%				
State Average	71.70%	72.32%	72.78%	73.24%		70.36%	74.24%	73.44%	74.57%						
Standard															

**Indicator 3.3: Children with Intellectual and Developmental Disabilities (IDD)**

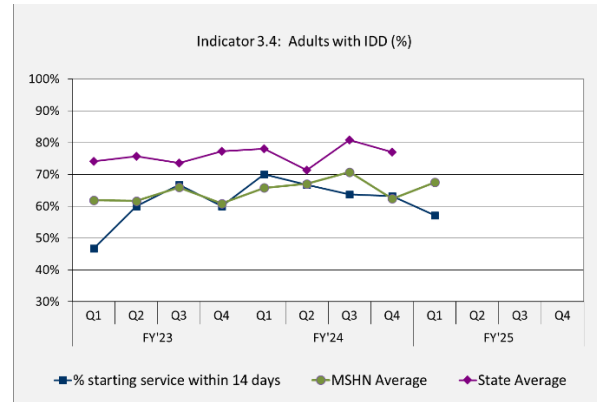
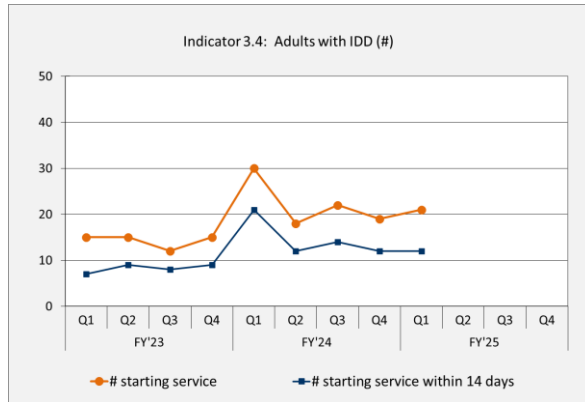
	FY'23					FY'24					FY'25				
	Q1	Q2	Q3	Q4	TOTAL	Q1	Q2	Q3	Q4	TOTAL	Q1	Q2	Q3	Q4	TOTAL
# starting service	32	42	57	46	177	37	48	58	43	186	60				
# starting service within 14 days	24	34	39	41	138	26	43	41	34	144	40				
# not starting service within 14 days	8	8	18	5	39	11	5	17	9	42	20				
% starting service within 14 days	75.00%	80.95%	68.42%	89.13%	77.97%	70.27%	89.58%	70.69%	79.07%	77.42%	66.67%				
MSHN Average	77.16%	81.42%	81.85%	82.12%		76.05%	80.97%	81.43%	83.64%		78.31%				
State Average	77.21%	75.99%	73.63%	75.94%		68.54%	73.39%	75.90%	83.54%						
Standard															





**Indicator 3.4: Adults with Intellectual and Developmental Disabilities (IDD)**

	FY'23					FY'24					FY'25				
	Q1	Q2	Q3	Q4	TOTAL	Q1	Q2	Q3	Q4	TOTAL	Q1	Q2	Q3	Q4	TOTAL
# starting service	15	15	12	15	57	30	18	22	19	89	21				
# starting service within 14 days	7	9	8	9	33	21	12	14	12	59	12				
# not starting service within 14 days	8	6	4	6	24	9	6	8	7	30	9				
% starting service within 14 days	46.67%	60.00%	66.67%	60.00%	57.89%	70.00%	66.67%	63.64%	63.16%	66.29%	57.14%				
MSHN Average	61.90%	61.62%	65.91%	60.82%		65.74%	67.01%	70.71%	62.37%		67.47%				
State Average	74.07%	75.73%	73.61%	77.26%		78.02%	71.27%	80.79%	76.94%						
Standard															



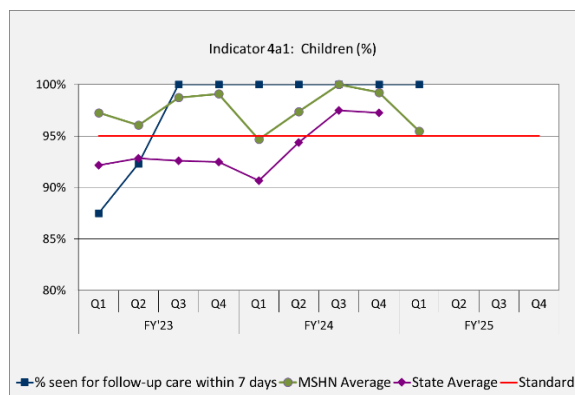
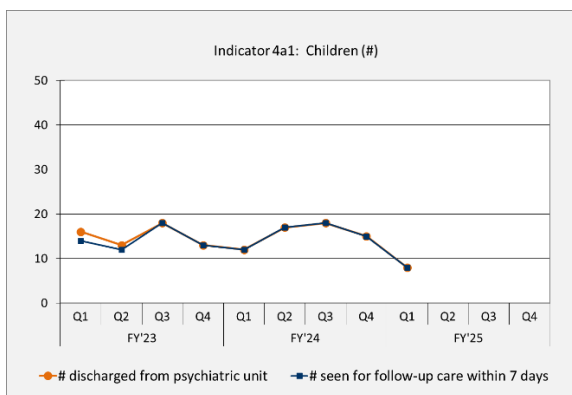
**Indicator 4a: ACCESS-CONTINUITY OF CARE**

The percentage of discharges from a psychiatric inpatient unit during the quarter that were seen for follow-up care within 7 days. Standard = 95%

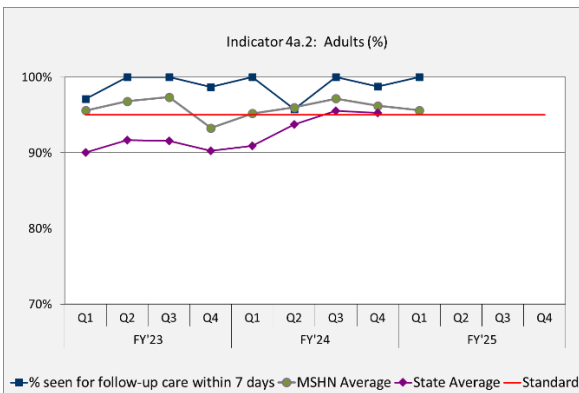
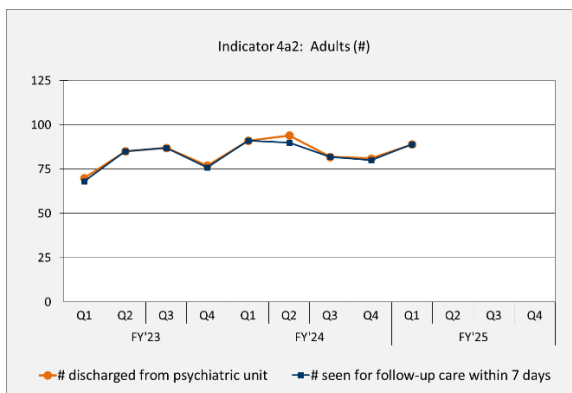
*Rationale for Use: When responsibility for the care of an individual shifts from one organization to another, it is important that services remain relatively uninterrupted and continuous. Otherwise, the quality of care and consumer outcomes may suffer. This is an indicator required by the federal Substance Abuse and Mental Health Services Administration.*

**Indicator 4a1: Children**

	FY'23					FY'24					FY'25				
	Q1	Q2	Q3	Q4	TOTAL	Q1	Q2	Q3	Q4	TOTAL	Q1	Q2	Q3	Q4	TOTAL
# discharged from psychiatric unit	16	13	18	13	60	12	17	18	15	62	8				
# seen for follow-up care within 7 days	14	12	18	13	57	12	17	18	15	62	8				
# not seen for follow-up care within 7 days	2	1	0	0	3	0	0	0	0	0	0				
% seen for follow-up care within 7 days	87.50%	92.31%	100.00%	100.00%	95.00%	100.00%	100.00%	100.00%	100.00%	100.00%	100.00%				
MSHN Average	97.25%	96.06%	98.74%	99.10%		94.67%	97.37%	100.00%	99.24%		95.48%				
State Average	92.18%	92.84%	92.60%	92.49%		90.64%	94.35%	97.49%	97.25%						
Standard	95%	95%	95%	95%	95%	95%	95%	95%	95%	95%	95%	95%	95%	95%	95%

**Indicator 4a2: Adults**

	FY'23					FY'24					FY'25				
	Q1	Q2	Q3	Q4	TOTAL	Q1	Q2	Q3	Q4	TOTAL	Q1	Q2	Q3	Q4	TOTAL
# discharged from psychiatric unit	70	85	87	77	319	91	94	82	81	348	89				
# seen for follow-up care within 7 days	68	85	87	76	316	91	90	82	80	343	89				
# not seen for follow-up care within 7 days	2	0	0	1	3	0	4	0	1	5	0				
% seen for follow-up care within 7 days	97.14%	100.00%	100.00%	98.70%	99.06%	100.00%	95.74%	100.00%	98.77%	98.56%	100.00%				
MSHN Average	95.60%	96.81%	97.35%	93.29%		95.20%	95.99%	97.16%	96.22%		95.61%				
State Average	90.05%	91.70%	91.58%	90.26%		90.94%	93.76%	95.56%	95.30%						
Standard	95%	95%	95%	95%	95%	95%	95%	95%	95%	95%	95%	95%	95%	95%	95%



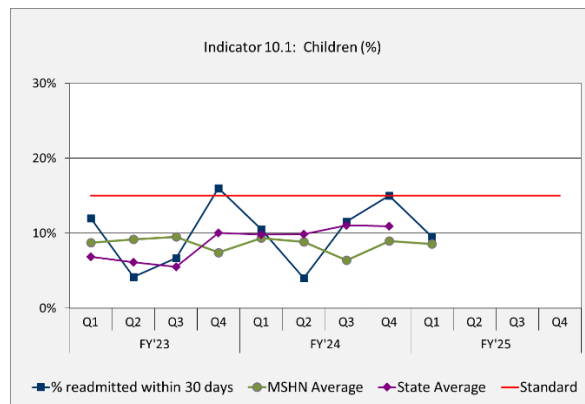
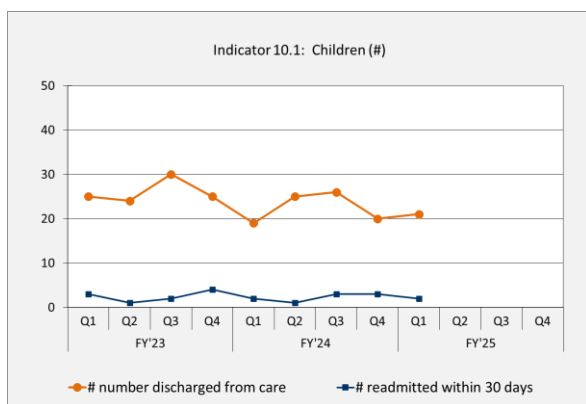
**Indicator 10: OUTCOME: INPATIENT RECIDIVISM**

The percentage of readmissions of children and adults during the quarter to an inpatient psychiatric unit within 30 days of discharge. Standard = 15% or less

*Rationale for Use: For some people with mental illness, the occasional use of psychiatric inpatient care is essential. However, rapid readmission following discharge may suggest that people were prematurely discharged or that the post discharge follow-up was not timely or sufficient. This indicator assessed whether CMHSPs are meeting the Department's standard of no more than 15 percent of people discharged from inpatient units are being readmitted within 30 days.*

**Indicator 10.1: Children**

	FY'23					FY'24					FY'25				
	Q1	Q2	Q3	Q4	TOTAL	Q1	Q2	Q3	Q4	TOTAL	Q1	Q2	Q3	Q4	TOTAL
# number discharged from care	25	24	30	25	104	19	25	26	20	90	21				
# readmitted within 30 days	3	1	2	4	10	2	1	3	3	9	2				
% readmitted within 30 days	12.00%	4.17%	6.67%	16.00%	9.62%	10.53%	4.00%	11.54%	15.00%	10.00%	9.52%				
MSHN Average	8.75%	9.19%	9.52%	7.41%		9.36%	8.84%	6.38%	8.95%		8.56%				
State Average	6.86%	6.11%	5.53%	10.05%		9.83%	9.87%	11.05%	10.90%						
Standard	15%	15%	15%	15%	15%	15%	15%	15%	15%	15%	15%	15%	15%	15%	15%

**Indicator 10.2: Adults**

	FY'23					FY'24					FY'25				
	Q1	Q2	Q3	Q4	TOTAL	Q1	Q2	Q3	Q4	TOTAL	Q1	Q2	Q3	Q4	TOTAL
# number discharged from care	125	157	164	154	600	147	157	125	150	579	148				
# readmitted within 30 days	14	26	20	11	71	10	14	15	20	59	13				
% readmitted within 30 days	11.20%	16.56%	12.20%	7.14%	11.83%	6.80%	8.92%	12.00%	13.33%	10.19%	8.78%				
MSHN Average	13.01%	12.70%	12.33%	11.40%		10.73%	10.95%	12.79%	11.44%		10.12%				
State Average	11.63%	11.54%	12.47%	12.68%		12.06%	12.38%	13.35%	13.88%						
Standard	15%	15%	15%	15%	15%	15%	15%	15%	15%	15%	15%	15%	15%	15%	15%

